

nashuatec

TOTAL DOCUMENT SOLUTIONS



C7528n/C7535hdn



OUTSTANDING BUSINESS COLOUR
TO KEEP YOU IN THE SPOTLIGHT

Aficio™

Fast, professional looking business colour printing, when you need it

The high speed C7528n and C7535hdn will effortlessly match the high-quality colour printing demands of any busy general office. These outstanding network-ready printers deliver brilliant, vivid colour output with all the versatile finishing options you need to produce professional looking colour documents in-house. Designed with all the flexibility and cost-saving benefits of fast double-sided printing in mind, these advanced and ultra-reliable laser printers can produce an impressively wide range of document types. With the addition of improved toner technology, easy document management software and trouble-free network connectivity, the C7528n and C7535hdn take colour imaging to a higher level.

It all adds up to a unique blend of speed, exceptional quality and versatility that will boost workgroup productivity by providing highly finished black and white and colour documents on-demand.



Nashuatec's unique approach, links people with knowledge and expertise, combining our wide experience of innovative, document related Products and Software Solutions with our world class Business and Professional Services to deliver the best Total Document Solutions for your business.

Produce highly finished, professional looking colour documents at A3, A4 and A5 sizes, all in-house



Paper-saving double-sided printing lowers the Total Cost of Ownership and is kinder to the environment



Fast, ultra-reliable colour printing to boost business productivity

High speed and superb reliability are the keys to improved productivity with these feature rich printers, whose swift warm-up times and fast first print speeds will never keep you waiting. The outstanding C7535hdn powers through colour pages at a rapid 35 colour pages per minute (ppm) and the C7528n delivers the same exceptional quality at an impressive 28 colour ppm. With the added benefit of the C7535hdn's fast, automatic double-sided printing, you have the capability to quickly produce a wide assortment of document types, in large volumes.

These outstanding colour printers are designed to boost business efficiency by minimizing user intervention, maximizing uptime, and allowing long, highly productive print runs.

Brilliant, high-quality documents every time

With the C7528n and C7535hdn you can achieve outstanding colour printing performance without any compromise on quality. Their true 1,200dpi print resolution ensures that every single colour or black and white print will be printed to the same consistently superior quality. The advanced imaging technology of these powerful laser printers features improved toner technology for better image detail, more vivid colour and sharper text compared to conventional methods.

Add a professional looking finish to your business printing

The C7528n and C7535hdn offer a world of output choices that will empower your users. They can handle a wide range of paper and media types, including thick stock and envelopes, from A5 up to large format A3, which makes them ideal for detailed spreadsheets and larger business and financial reports. Just add the full range of essential sorting, saddlestitching, collating and booklet options and you have comprehensive paper handling and finishing capabilities that will satisfy the most demanding workgroups.

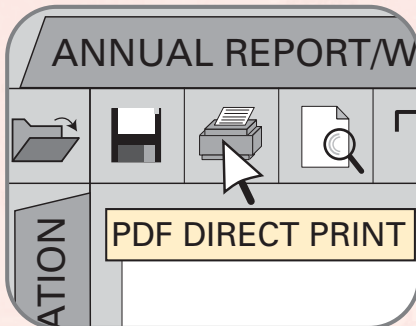
Lowering the Total Cost of Ownership

With new energy-saving toner technology, plus cost-effective, paper saving double-sided printing, both the C7528n and C7535hdn will deliver high-quality, truly affordable colour printing. Superb engineering and meticulous attention to every cost-saving detail, ensures a very competitive cost per page and a significantly reduced Total Cost of Ownership.

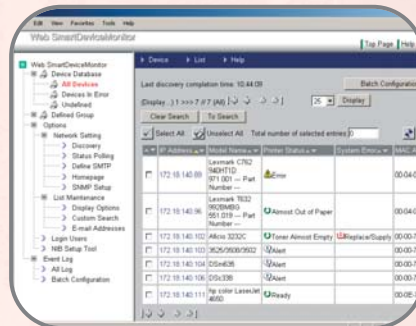
Improve workgroup productivity

Your workgroups will benefit from productivity enhancing features designed to ensure continuous, uninterrupted printing. A standard 1,100 sheet paper capacity that can be expanded to a massive 3,100 sheets, plus high yield colour and black toners, ensure maximum availability and allow long, highly productive print runs. The additional advantages of user-friendly web-based monitoring and highly reliable unattended printing, further improve workgroup productivity.

PDF Direct Print keeps your network moving with fast, uninterrupted printing of PDF files



Powerful management software ensures maximum printer availability and improved productivity



Comprehensive connectivity options allow trouble-free integration into any network



Powerful remote management software for optimum efficiency

The C7528n and C7535hdn feature PDF Direct Print which minimizes network traffic by allowing uninterrupted printing of PDF files at full speed. They also include powerful management software to ensure maximum availability of these devices and easier management of print projects.

Web SmartDeviceMonitor software gives Network Administrators central control of your connected document devices through a web-browser interface. Easily downloaded and installed, it allows you to manage these devices remotely from any desktop, including automatic configuration to your specifications and group and user profiling. Furthermore, Web SmartDeviceMonitor constantly monitors your document devices to provide proactive communication of their status. By quickly emailing alerts to users, devices are on-line in no time maximizing productivity.

Web Image Monitor comes pre-installed on these devices and is accessed through a standard web browser interface. As a result, Network Administrators save valuable time by managing the C7528n and C7535hdn directly from their PC, from setting user names to configuring each function. At the same time, users can view, download and re-print documents stored within the C7535hdn's document server, or simply check the status of paper trays or toner levels in the machine, increasing efficiency and productivity.

Easily find and print documents stored anywhere on your network

Nashuatec's RPCS printer driver makes these printers incredibly simple to use. Its icon driven interface allows you to simply click to repeat previously saved or common output settings, such as double-sided or 2-Up printing.

In addition, Nashuatec's DeskTopBinder software allows you to easily manage, view and reproduce documents stored anywhere on your network. It offers you one integrated portal to manage documents from different sources and locations, thereby increasing the efficiency and productivity of your document communications.

Trouble-free integration with your network

The C7528n and C7535hdn are pre-installed with a Network Interface Card and USB2.0 as standard. They support all major networks and industry standard printer languages, ensuring seamless integration into your document environment. Further connectivity options including Wireless LAN (IEEE802.11b), IEEE1394 and Bluetooth are available for organizations using the latest mobile technologies.

Outstanding Software and Services

Complementing the C7528n and C7535hdn, Nashuatec offers a superb range of Software Solutions and Services, which are designed to add value and ensure that our devices continue to operate seamlessly and reliably. Covering all aspects of your business, including document management, network control, consultancy, training and unrivalled support, these innovative products and services offer a tailor made solution to improve productivity, workflow efficiency and cost control throughout your organization.

Aficio™

The Nashuatec C7528n and C7535hdn bear the Aficio Symbol – your sign of digital technology, innovation and customer support in action.



Keep high-quality, affordable colour printing inside your business

The C7528n and C7535hdn's high speeds, exceptional quality, versatile finishing and intelligent document management software, now make it possible for you to produce high-quality, professional looking colour documents in-house.

Whether you choose the extra speed and hard drive flexibility of the C7535hdn, or the outstanding value delivered by the C7528n, you'll get fast, efficient, ultra-reliable single or double-sided colour laser printing, every time.

SPECIFICATIONS

C7528n/C7535hdn

Printer

Technology

Laser beam scanning, electro photographic printing & dual component toner development, 4 drums tandem method

Print speed (simplex/duplex)

Full colour

(A4): 28 prints per minute (C7528n)
35 prints per minute (C7535hdn)

Black and white

(A4): 28 prints per minute (C7528n)
35 prints per minute (C7535hdn)

Processor

Celeron 733MHz

Printer languages/resolution

PCL5e-c: 300 x 300dpi/600 x 600dpi
PCL6, Adobe® PostScript® 3™, RPCS™:
300 x 300dpi/600 x 600dpi/
1,200 x 600dpi/1,200 x 1,200dpi

Warm-up time

Less than 95 seconds

First print speed

Black and white: Less than 11 seconds
Full colour: Less than 12 seconds

Memory

Standard: 256MB
Maximum: 512MB
Hard Disk Drive: 40Gb (option for C7528n)

Fonts

PCL5e-c/PCL6: 35 intelli fonts, 10 true type fonts, 1 bitmap font (31 fonts can be downloaded), 13 fonts (International Font)

Adobe® PostScript® 3™: 136 Adobe® type 1 fonts, 136 Adobe® type 1 fonts
Option: OCR & Barcode

Connectivity (standard)

Ethernet 10 base-T/100 base-TX
USB2.0

Connectivity (option)

Bi-directional IEEE1284
IEEE1394
Wireless LAN (IEEE802.11b)
Bluetooth
Gigabit Ethernet
USB Host I/F

Network protocol

TCP/IP, IPX/SPX, SMB (NetBeui, NetBIOS over TCP/IP), AppleTalk

Supported networks

Windows® 95/98SE/Me/NT4.0/2000/XP/Server 2003
Novell® NetWare®
3.12/3.2/4.1/4.11/5.0/5.1/6/6.5
UNIX Sun® Solaris 2.6/7/8/9, HP-UX 10.x/11.x/11i v1/11i
SCO OpenServer 5.0.6
RedHat® Linux 6.x/7.x/8.x/9.x/Enterprise
IBM® AIX v4.3 & 5L v5.1/5.2
Macintosh 8.6/9.2x
Macintosh OS X Native v10.1/10.2/10.3 or later (native mode)
SAP® R/3® 3.x or later

Paper size

Paper trays: A5 - A3
Bypass tray: A5 - A3 oversize

Paper weight

Paper trays: 60 - 105g/m²
Bypass tray: 60 - 163g/m²

Paper input capacity

Standard: 2 x 500-sheet paper trays
1 x 100-sheet bypass tray
Maximum: 3,100 sheets

Paper output capacity

500 sheets face down

Media

Plain paper, recycled paper, transparencies, laser printer labels, envelopes

Toner

Black: 24,000 sheets¹
Colour (C, M, Y): 10,000 sheets¹
¹ A4 with 5% coverage

Duty Cycle

200,000 pages per month

Power source

220 - 240V, 50/60Hz

Power consumption

C7528n: Less than 1.44kW
C7535hdn: Less than 1.55kW
Energy saver mode: Less than 26W

Dimensions (W x D x H)

C7528n: 575 x 678 x 745mm
C7535hdn: 670 x 678 x 745mm

Weight

C7528n: 85kg
C7535hdn: 97kg

Software

DeskTopBinder™ Lite
SmartDeviceMonitor™
Web SmartDeviceMonitor™
Web Image Monitor
Printer utility for Macintosh
Additional features: PDF Direct Print

Options

- 64/128/256MB SDRAM DIMM
- Bi-directional IEEE1284
- FireWire (IEEE1394)
- Wireless LAN (IEEE802.11b)
- Bluetooth
- Gigabit Ethernet (IEEE802.3z)
- USB Host I/F
- Camera Direct Print Card
- User Account Enhance Unit
- 1 - 2 x 500-sheet paper trays
- 2,000-sheet large capacity tray
- 2,000-sheet finisher with 50-sheet stapler
- Punch unit (2/4 hole & 4 hole)
- 1,000-sheet booklet finisher
- Duplex unit (standard for the C7535hdn)

Company management systems applied during the manufacturing of all Nashuatec products conform to ISO9001 quality and ISO14001 environmental management standards.

As an ENERGY STAR Program Participant, Nashuatec has determined that this product meets the ENERGY STAR guidelines for energy efficiency.

We reserve the right to make amendments to the technical specifications and external appearance of this equipment. Please note that the full range of options shown in this publication may not always be available. All brand and product names are recognized and hereby acknowledged, as registered trademarks of their respective owners.



nashuatec

Part of the NRG group

www.nashuatec.com

