

DOC-Q-MANAGER

Move your high volume document workflow in a profitable direction



- One simple production tool for active management
- Grow output capabilities with cluster printing
- Automate workflow with enhanced scripting
- Expand your customer base with Internet job tickets



nashuatec

TOTAL DOCUMENT SOLUTIONS

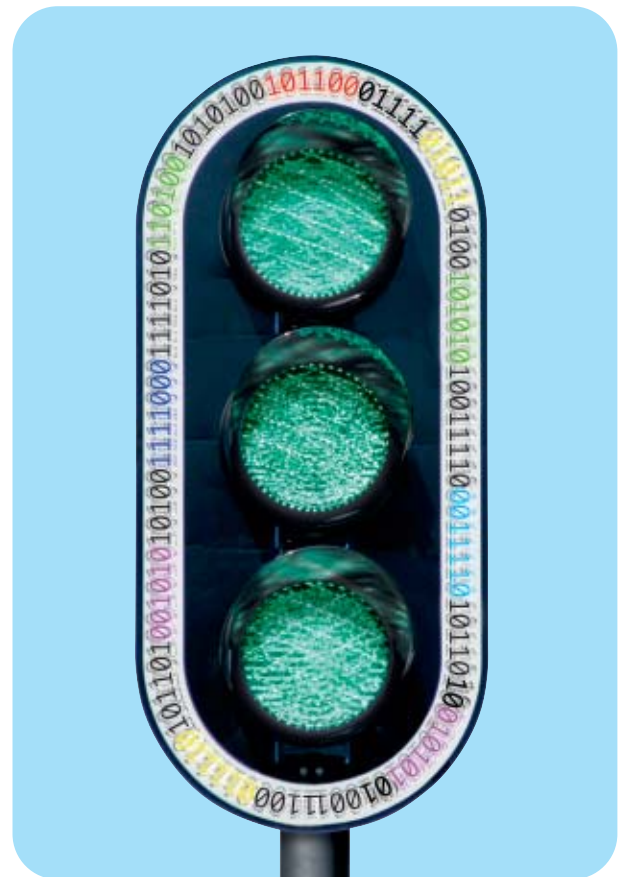


Enjoy the rewards of automated production workflow

Today's high volume production print services are under increasing pressure to deliver more quickly, with more value and to make a profit. Customers expect a fast turnaround even for complex jobs involving variable data printing for one-to-one marketing, document editing and professional finishing.

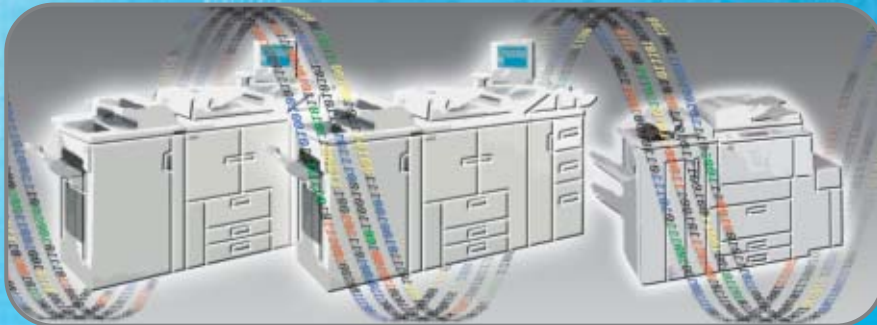
Developed as a cost-effective application for smaller high volume environments, including Central Reprographics Departments (CRD), quick printer service bureaus and data centres, doc-Q-manager is especially easy to use, making it the ideal tool to keep your document production flowing.

doc-Q-manager provides a central interface to optimise your document workflow. By bringing higher levels of automation, doc-Q-manager enables you to handle volume and complexity with speed and ease, allowing you to gain that vital competitive advantage.

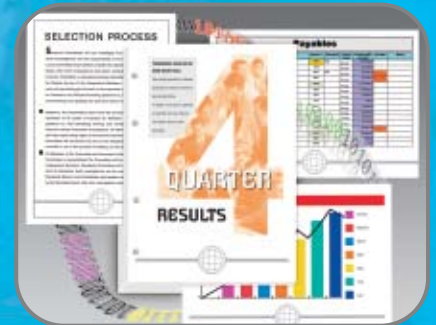


Nashuatec's unique approach, links people with knowledge and expertise, combining our wide experience of innovative, document related Products and Software Solutions with our world class Business and Professional Services to deliver the best Total Document Solutions for your business.

Meet peak demands and tight deadlines with cluster printing, by creating a single virtual printer from a group of devices



Manage multi-format documents with integrated print-on-demand tools, such as standard PDF Editors and our own editing software



Take total control of document workflow

Hold-Delete-Re-prioritise. With doc-Q-manager you have complete control and visibility over every job and even every page!

Get jobs done fast, on-time and at a low cost

doc-Q-manager makes cluster printing easy, by linking multiple devices together to act as a single print engine. Scripted load balancing offers new levels of efficiency to meet peak demand and tight deadlines, by spreading jobs across the cluster for faster turnaround. For example, if a machine is 'off-line,' the job is automatically re-routed. Cluster printing also offers a cost-effective means of incrementally scaling your production environment as your business grows.

Automated email notification enhances productivity

Whether job complete or printer 'off-line,' receiving an email in real-time helps you manage your workflow and high-volume devices far more effectively.

Easily manage and edit jobs

Seamless integration with print-on-demand tools enables jobs to be submitted to any Windows supported printer. Page numbering and page editing, including adding and removing images, is also easily achieved.

Avoid costly errors with page proofing

All jobs can be previewed on screen or sent to a dedicated proofing device, allowing you to proof a job without interrupting production.

Handles different types of data

Data processing and IT printing environments need to accept jobs from various sources, including Mainframe print streams (IPDS supported). Our consultants will even help you customize and integrate doc-Q-manager into your host printing environment to accept common and proprietary Metacode print streams, such as XES, DJDE and IPDS.

PDF Compatibility

doc-Q-manager accepts PDFs directly into the workflow. This avoids the costly and time-consuming process of using multiple applications. With the ability to create and apply print properties to 'hot folders,' PDFs are printed without the need to open any application – simply 'drag and drop' the job into the 'hot folder.'

Convenient job submission via job tickets

Using doc-Q-manager's job ticket forms increases accuracy. Comprehensive and exact job details, including finishing options and number of copies, are captured via screen prompts that guide the customer through the submission process. These jobs are automatically added to your workflow, and delivery confirmations sent. Jobs can also be submitted via the Internet, offering an excellent way to increase business as part of your e-commerce strategy. Additionally, doc-Q-manager is easily integrated with your customer billing software.

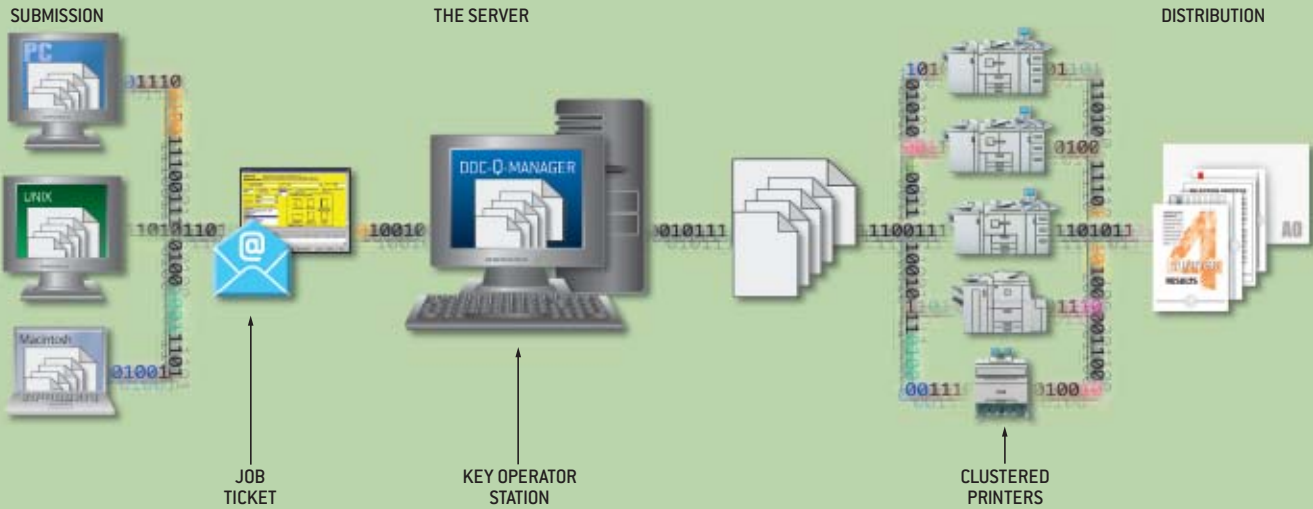
Easy to master

There is no lengthy or costly training required for doc-Q-manager. Its familiar Windows based WYSIWYG interface, ensures doc-Q-manager can be mastered within half a day of specific training.

Designed to put the control of print management at your fingertips. This innovative production tool streamlines document workflow and automates production processes, helping you to gain that vital competitive edge.

doc-Q-manager keeps high volume document productivity flowing faster and smoother

HIGH VOLUME WORKFLOW PRODUCTION ENVIRONMENT



SPECIFICATION

doc-Q-manager

Operating System

Windows NT (SP6a)
Windows 2000 (Professional/Server)
Windows Server 2003
Windows XP (Professional)

Server

IBM compatible, Intel Pentium IV or above, 1GHz or higher, 256MB RAM, 4GB disk space for installation and suggested hard disk space for spool file storage 1GB

System Requirements

To receive notification messages users must be running Windows Messenger
ASCII, Windows EMF (1.003, 1.008)
& RAW, PDF

doc-Q-PDF

Operating System

Windows 2000 (Professional/Server)
Windows XP Professional
Windows 2003 Server
Adobe Acrobat Standard v5 or above

Server

IBM compatible, Intel Pentium 4 or above, 3GHz or higher, 256MB, 10MB of disk space

doc-Q-view

Server

Will reside on the same server as doc-Q-manager
Requires 20MB of disk space for installation

Printer language support

Adobe PostScript, Adobe PostScript level 2, Adobe PostScript level 3, PDF¹, PCL4, PCL5e, PCL5c, PCL6/PCL-XL

doc-Q-ticket form server

Will reside on the same server as doc-Q-manager
Requires 7MB of disk space for installation

doc-Q-ticket form designer

Operating System

Windows NT (SP6a)
Windows 2000 (Professional Server)
Windows Server 2003
Windows XP (Professional)

Workstation

IBM compatible, 4GB available disk space for installation, Internet Explorer 5.0 or above

DOC-Q-MANAGER

doc-Q-ticket client

Operating System (workstation)

Windows 95/98/NT4 (SP6a)/2000/XP/TSE
Workstation
IBM compatible, 4GB available disk space for installation, Internet Explorer 5.0 or above

¹ In conjunction with doc-Q-pdf

We reserve the right to make amendments to the technical specifications and external appearance of this software. Please note that the full range of options shown in this publication may not always be available. All brand and product names are recognised and hereby acknowledged, as registered trademarks of their respective owners.



NDQW6R0004680

nashuatec

Part of the NRG group



www.nashuatec.com