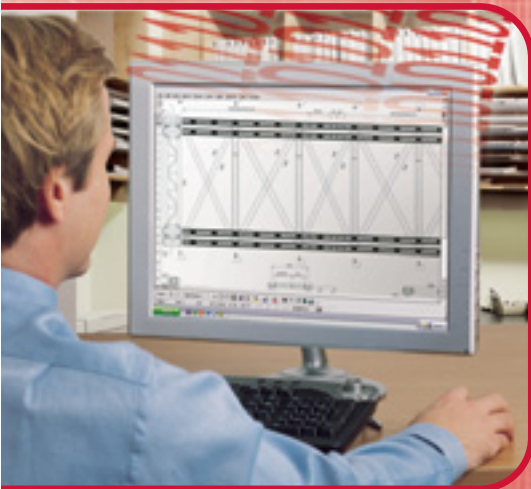


nashuatec

TOTAL DOCUMENT SOLUTIONS



A045



**THE COMPLETE DIGITAL SOLUTION
IN ONE COMPACT MACHINE**

Aficio™

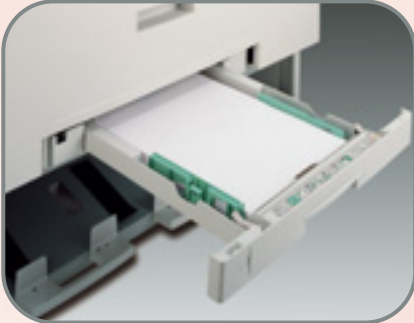
Top quality production and ease of use in one compact device

Is your analogue plan copier still able to handle your requirements? Have you considered the low productivity of your inkjet plotter and the accompanying high costs of your prints? With the Nashuatec A045 you can solve these problems at once. This affordable all-in-one system is not only the most compact A0 device in the world, with its true 600dpi print, copy and scan resolution, it also offers the best output quality available. Its simple control panel, easy paper setting and real walk-up simplicity also guarantee user-friendly operation. From now on, expensive and time-consuming outsourcing is a thing of the past as the A045 supports all paper sizes from A4 up to 914mm width. Equipped with the latest in digital technology, the A045 sets the new standard for this market and delivers the ultimate in ease of use and image quality in one compact device.

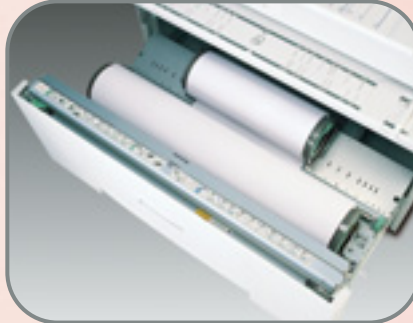


Nashuatec's unique approach, links people with knowledge and expertise, combining our wide experience of innovative, document related Products and Software Solutions with our world class Business and Professional Services to deliver the best Total Document Solutions for your business.

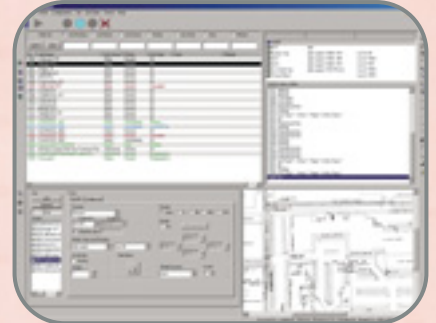
The A3 and A4 Paper Cassette offers the added advantage of smaller format printing



The versatile 2-Roll Paper Feeder gives complete flexibility over print media



Control workflow and view the status of all jobs with the Plotbase software



The high-quality, wide format standard

The A045 handles the toughest wide format demands with ease. This compact device delivers excellent 600dpi printing, copying and scanning of all your professional documents. Diverse paper sizes are no problem - with up to four different paper sources, the A045 will handle all available paper sizes without the need for time-consuming roll changes.

All-in-one functionality

Professional production of large size documents, such as construction drawings and installation schemes, often requires outsourcing. With the A045 you can eliminate this expensive and time-consuming way of working by achieving the same results much more efficiently in-house and ensure sensitive information remains confidential. With the optional controller the A045 cleverly incorporates print, copy and scan functionality in one design.

Superb quality

Your customers expect the best: high-quality output is crucial. With 600dpi and up to 256 greyscales for printing, copying and scanning, the A045 offers impeccable output with edge-to-edge accuracy. Solid fills are blacker, lines are finer and crisper, halftones and shading is optimised. While other systems might compensate high quality with low productivity, the A045 continues to print high-quality 600dpi at the same speed, so you can now produce superb quality output in-house.

Compact & cost effective

Thanks to its space saving design and incredibly small footprint, the A045 is the most compact wide format system on the market. The device can be placed close to users, who can now produce check plots, scans and even complex distribution sets directly from their desks. By eliminating the need for separate plotters and scanners and reducing noise to a minimum, your working environment will definitely improve. For increased user convenience the A045 has the ability to handle all your wide format copy, scan and print demands from the front of the machine. This allows you to place the system against the wall, saving valuable office space.

All-round paper handling

To meet every possible wide format requirement and offer a truly complete solution, the Nashuatec A045 is capable of processing a variety of paper sizes from A4 up to 914mm width. Outsourcing of special formats or using multiple devices is no longer required as the A045 can handle all formats. Using the optional 2-Roll Feeder, Paper Cassette and Bypass Tray, the user has a total of four media sources available at the touch of a button.

Supporting your entire wide format workflow

To optimize performance, you need a complete print, copy and scan solution that combines user-friendly operation with fast, high-quality copy output and state-of-the-art printing. The Nashuatec A045 offers all these qualities in addition to excellent network integration and versatility.

Front and rear paper output options allows prints to be removed directly, or stacked automatically if sets are required



Scan to archive empowers users to save documents digitally on an individual PC or the network



Time saving productivity

Your business cannot afford slow throughput. The A045 takes less than 2 minutes to warm up and your first A1 output is ready in only 22 seconds. Its high-speed print engine produces 3.6 linear metres per minute, equivalent to two A0s and four A1s, even at 600dpi.

Scan once, print many

Some of your originals might be old and irreplaceable drawings or paste-ups. With the latest technology, the A045 scans large drawings once and stores them digitally for reproduction. As a result, there is less chance of damaging valuable originals and you save time otherwise spent on continuous scanning. When a project requires multiple drawings to be used as one set, the A045 enables you to scan once and print as many collated sets as you need ready for distribution. Alternatively, you can scan and store for later retrieval.

User friendly operation

With its simple LCD control panel, the A045 is very easy to use. The display provides detailed available media information and device status. Accessing the system's many features is simple and intuitive with the A045.

Easy maintenance & roll flexibility

The A045 can be customized to cope with your precise needs. It is available in a one roll or two roll configuration, with specially designed roll holders for simple paper setting. Changing a roll is also easy and hassle free with Nashuatec's inventive clamp system.

For a professional image

The A045 produces professional quality print, copy and scan output at 600dpi. All your technical documents, such as architectural plans, 3D drawings and graphics, are reproduced at the highest possible quality standard giving you a competitive edge when tendering a bid or presenting a concept.

Scale your documents

For versatile handling of large documents, the A045's advanced digital technology allows you to reduce A0 documents to A4. Smaller documents can also be enlarged. The zoom function even allows you to scale output to almost any size in up to 0.1% increments.

Complete document management

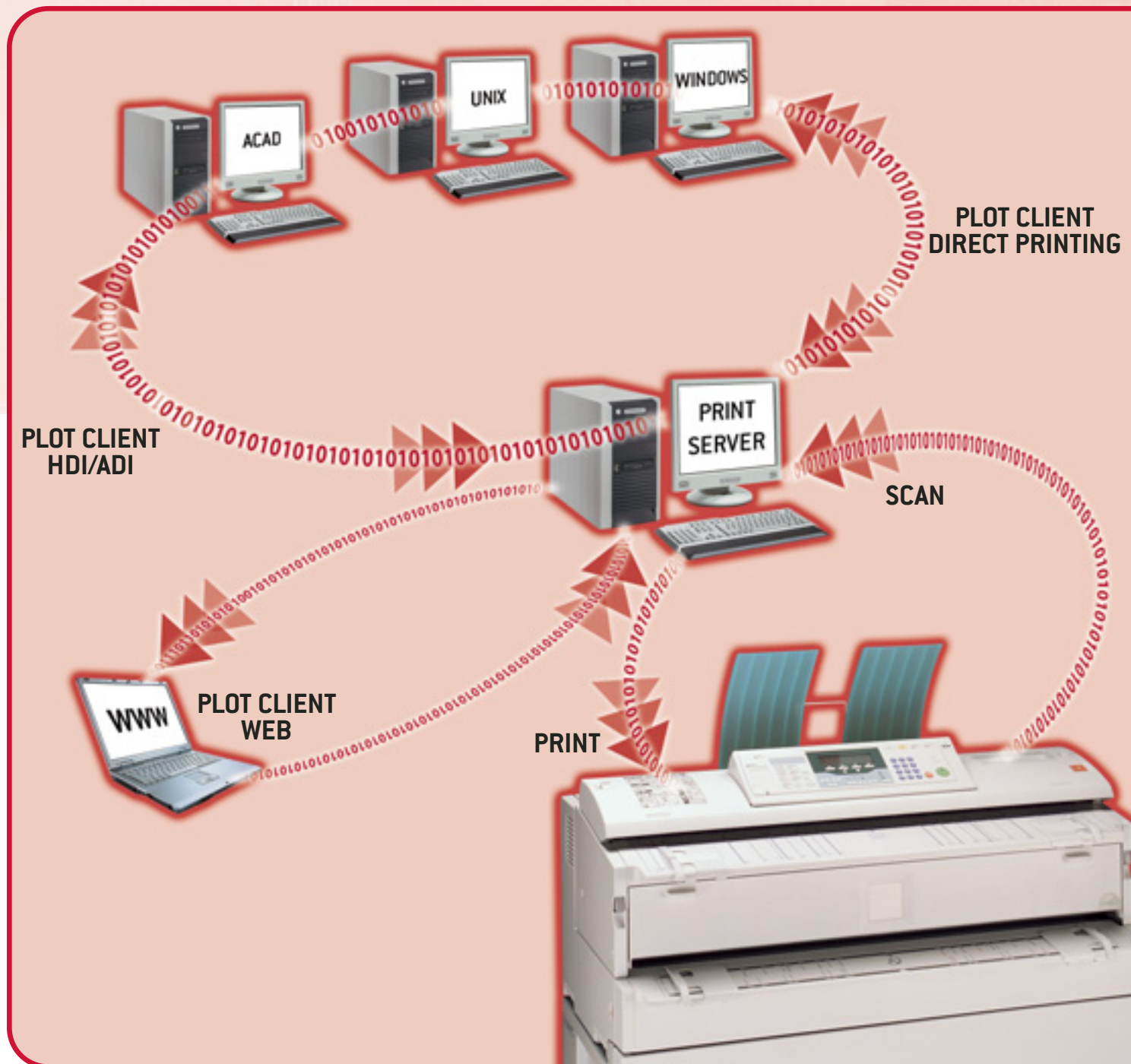
The flexibility to manage all documents is an essential step towards a smooth running drawing office environment. The Nashuatec A045 provides full control of all AutoCAD options and its driver supports all current AutoCAD Plot settings.

Software Solutions

Complementing the A045, Nashuatec offers a superb range of Software Solution products, specifically designed to integrate this device into your document communications environment. These Software Solutions are aimed at improving the way you manage documents and information in your organisation. Combined with our expert consultancy, Business and Professional Services and support, they offer a tailor made solution to your office, improving efficiency, productivity and cost control.

Aficio™

The Nashuatec A045 bears the Aficio Symbol – your sign of digital technology, innovation and customer support in action.



All-in-one wide format connectivity

The Nashuatec A045 allows printing from virtually any type of computer or platform. Installed in a Windows or UNIX environment, this system works reliably allowing direct printing from

commonly used applications. The A045 is delivered with a set of clients and drivers to ensure printing from applications such as AutoCAD, Windows, Bentley and web printing via Web Client.

Copier

Copying process

Electro photographic printing

Copy speed

3.6 metres per minute
2 copies per minute [A0]
4 copies per minute [A1]

Resolution

600dpi

Multiple copy

Up to 20

Warm up time

Less than 2 minutes

First output speed

Less than 22 seconds

Reduction/enlargement

4R/4E

Zoom

25 – 200% [in 0.1% steps]
200 – 400% [in 0.2% steps]

Memory

Standard 80MB

Paper input capacity

Bypass tray
1-Roll Feeder (option)
2-Roll Feeder (option)

Paper output capacity

Front: 25 sheets A1 (plain paper)
Rear: 20 sheets A0/A1 (plain paper)

Paper size

Minimum 182 x 140mm
Maximum 914 x 6,000mm

Paper weight

51 - 110g/m²

Dimensions (W x D x H)

(including Roll Feeder)
1,080 x 700 x 1,280mm

Weight

(including Roll Feeder)
Less than 175kg

Power source

220 - 240V, 50/60Hz

Power consumption

Less than 1.44kW

Printer/Scanner (option)



Printer

Controller type

External (server type)

Print speed

3.6 metres per minute
2 prints per minute [A0]
4 prints per minute [A1]

Printer resolution

600dpi

Print size

Minimum 182 x 140mm
Maximum 914 x 6,000mm

Network protocol

TCP/IP, IPX/SPX, lpr/lpq, HTML, SMB

Supported file formats

HPGL2, Calcomp 906/907, TIFF
(uncompressed/G3/G4), CAL, BMP, RCL,
PCX, T6X, CIT, HP/RTL, WMF, DWG, Adobe[®]
PostScript[®] 3™ (option), CGM (option)

Supported environments

Windows[®] 95/98/Me/NT4.0/2000/XP/
2003 Server
Macintosh 8.6 or later (except for
v10.0.x)
UNIX Sun[®] Solaris 2.6/7/8, HP-UX
10.x/11.x
SCO OpenServer 5.0.6
RedHat[®] Linux 6.x/7.x
IBM iSeries/AS/400 using OS/400
Host Print Transform

Recommended PC

Please contact your supplier for the
latest recommended list.



Scanner

Resolution

Standard 600dpi
[150 – 1,200dpi user selectable]

Original size

Maximum 914 x 6,000mm

Option

Scan to PDF

Software/Drivers

RW-240 PLOTBASE
RW-240 PLOTCLIENT/WIN
RW-240 WINPRINT
Bentley[®]
RW-240 PLOTCLIENT HDI/ADI
RW-240 PLOTCLIENT/WEB
SCANTOOL

Other Options

- 1-Roll Feeder
- 2-Roll Feeder
- 250-sheet paper cassette (up to A3+)
- Table
- Hard Disk Drive
- Stamp board

Company management systems applied during the manufacturing of all Nashuatec products conform to ISO9001 quality and ISO14001 environmental management standards.

As an ENERGY STAR Program Participant, Nashuatec has determined that this product meets the ENERGY STAR guidelines for energy efficiency.

We reserve the right to make amendments to the technical specifications and external appearance of this equipment. Please note that the full range of options shown in this publication may not always be available. All brand and product names are recognized and hereby acknowledged, as registered trademarks of their respective owners.



MA04500006680

nashuatec

Part of the NRG group

www.nashuatec.com

