

nashuatec

TOTAL DOCUMENT SOLUTIONS



MP 5500/6500/7500



**HIGH SPEED DOCUMENT PRODUCTIVITY
FOR YOUR ORGANIZATION**

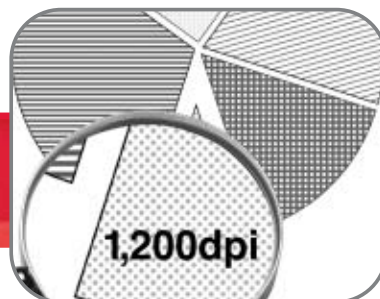
Aficio™

Increase your high volume document productivity

High volume document devices in a large office or Central Reprographic Department (CRD) need to be reliable, easy to use, and network ready to help maintain a competitive business edge.

Building on extensive black and white document production expertise, Nashuatec introduces the MP 5500, MP 6500 and MP 7500. This range of fast and efficient multifunctional products (MFPs) maximizes your print, copy and scan output whilst reducing Total Cost of Ownership (TCO). Fast print speeds of 55, 65 or 75 pages per minute (ppm) means your documents are produced quickly, whilst intelligent network and security features enable fast document access with tight security. A variety of professional finishing options eliminates the need for expensive outsourcing, enabling greater cost control whilst boosting productivity.

Combining speed and security, productivity with professional finishing, the MP 5500, MP 6500 or MP 7500 offer a flexibility of use that make them ideal for both high-volume office environments and CRDs.



Nashuatec's unique approach links people with knowledge and expertise, combining our wide experience of innovative, document related Products and Software Solutions with our world class Business and Professional Services to deliver the best Total Document Solutions for your business.

Easy-to-use control panel provides thumbnail print previews and access to the document server



Advanced security features help prevent unauthorized access of sensitive information



High speed and maximum productivity

The easy-to-use multifunctional MP 5500, MP 6500 and MP 7500 combine fast printing, copying and scanning speeds, as well as a host of finishing options to radically improve your document productivity. These powerful high-volume Nashuatec devices offer excellent output speeds of 55, 65 or 75ppm respectively, meaning that your documents are produced on demand – ideal for larger offices, CRDs or print shop environments. Productivity can be boosted even further at peak times by linking two devices together using the tandem option to deliver output speeds of 110, 130 or 150ppm.

Professional finishing features

Bring the end-to-end document production process in-house and make the process more cost-effective, with a wide range of professional finishing options including booklet-making, z-folding, stapling, cover interposing and hole-punching. In addition, true 1,200dpi print resolution gives all your documents the professional quality essential for presentations and external documents.

Have confidence in document security

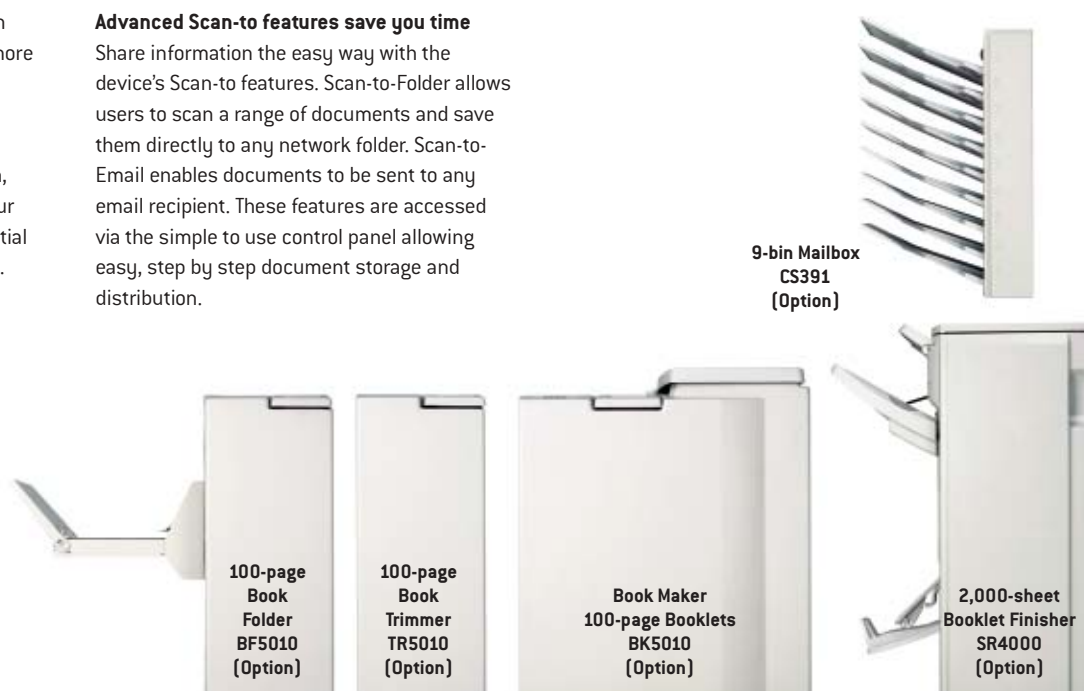
Effective document security management means your office devices need powerful confidentiality features built-in. The MP 5500, MP 6500 or MP 7500 can help you maintain tight security on sensitive information with a range of features, such as Windows Authentication requiring users to input their personalised Windows passwords in order to retrieve documents. The Unauthorized Copy Control feature can help prevent confidential documents being copied, and the Data Overwrite Security (DOS) Kit overwrites temporary data stored on the device's hard disk drive.

Advanced Scan-to features save you time

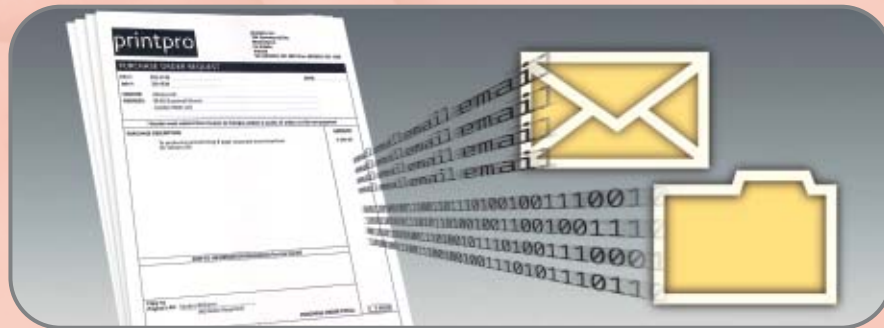
Share information the easy way with the device's Scan-to features. Scan-to-Folder allows users to scan a range of documents and save them directly to any network folder. Scan-to-Email enables documents to be sent to any email recipient. These features are accessed via the simple to use control panel allowing easy, step by step document storage and distribution.

Access the large document server

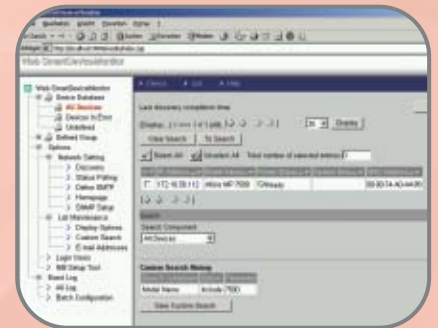
Quickly access your most frequently-used documents with the large server capacity of these devices. Documents such as invoice templates and purchase orders can be stored locally on the devices' hard disk drive and produced on demand.



Efficient document communication with Scan-to features for the digital distribution of hard copy documents



Central control of devices for network administrators using Web SmartDeviceMonitor



A user-friendly touch screen control panel

Using the MP 5500, MP 6500 and MP 7500 is simple, thanks to the easy-to-use control panel. The large, simplified screen design guides even new users to effortlessly complete tasks. The display includes a preview option, where documents on the device server can be viewed in thumbnail format in order to check layout and formatting prior to printing or copying.

Web SmartDeviceMonitor

Web SmartDeviceMonitor software gives Network Administrators central control of connected document devices via a web browser. Easily downloaded and installed, it allows automatic detection and configuration of devices and provides proactive communication of their status via email, maximizing user productivity.

Consideration for the environment

The MP 5500, MP 6500 and MP 7500 are designed to work efficiently and at a low level of power consumption. These devices offer features which encourage efficient use of paper such as double-sided printing and Scan-to features.

Outstanding Software and Services

Complementing the MP 5500, MP 6500 and MP 7500, Nashuatec offers a superb range of Software Solutions and Services, which are designed to add value and ensure that our devices continue to operate seamlessly and reliably. Covering all aspects of your business, including document management, network control, consultancy, training and unrivalled support, these innovative products and services offer a tailor made solution to improve productivity, workflow efficiency and cost control throughout your organization.

Aficio™

The Nashuatec MP 5500, MP 6500 and MP 7500 bear the Aficio Symbol – your sign of digital technology, innovation and customer support in action.





Achieve a professional finish for your documents

Office environments and CRDs need to produce a variety of presentable, business documents, so the benefits of in-house document finishing are clear – your completed documents produced easily, quickly and cost-effectively. From simple jobs such as hole-punching and stapling, to the more sophisticated cover interposing and booklet making, your organization can complete documents more efficiently and more

productively by doing it in-house. In addition, the built-in document security features of each device mean that your documents can be secure from unauthorized copying. The MP 5500, MP 6500 and MP 7500 are ideal for your organization, removing the need for costly outsourcing and boosting your internal productivity to provide the perfect finish.

SPECIFICATIONS

MP 5500/6500/7500



Printer¹

Print speed

55/65/75 prints per minute

Printer language/resolution

Standard:

PCL5e: Up to 600 x 600dpi

PCL6/RPCS[™]: Up to 1,200 x 1,200dpi

Option: Adobe[®] PostScript[®] 3[™]:

Up to 1,200 x 1,200dpi

Interface

Standard: Ethernet 10 base-T/100 base-TX
USB 2.0

Option: Wireless LAN (IEEE802.11b)

FireWire (IEEE1394)

Bi-directional IEEE1284

Bluetooth

USB Host I/F

Gigabit Ethernet

Memory

512MB + 80GB Hard Disk Drive
(shared with copy function)

Network protocol

TCP/IP, IPX/SPX, AppleTalk

Supported system environments

Windows[®] 95/98SE/Me/NT4.0/2000/XP/
Server 2003

Novell[®] NetWare[®] 3.12/3.2/4.1/4.11/
5.0/5.1/6/6.5

UNIX Sun[®] Solaris 2.6/7/8/9/10, HP-UX
10.x/11.x/11iv2

SCO OpenServer 5.0.6/5.0.7

RedHat[®] Linux 6.x/7.x/8.x/9.x/Enterprise

IBM[®] AIX v4.3/5L v5.1/5L v5.2/5.3

Macintosh 8.6 or later (OS X Classic)

Macintosh X v10.1 or later (native mode)

IBM[®] System i5[™] HPT

mySAP[™] ERP

Zoom

25 - 400% (in 1% steps)

Memory

Standard: 256MB + 80GB Hard Disk Drive

Maximum: 512MB + 80GB Hard Disk Drive

Paper input capacity

Standard: 2 x 1,550-sheet tandem trays

2 x 550-sheet paper trays

100-sheet bypass tray

Maximum: 8,300 sheets

Paper output capacity

Maximum: 3,750 sheets

Paper size

A6 - A3

Paper weight

Paper trays: 53 - 128g/m²

Bypass tray: 53 - 216g/m²

Duplex: 64 - 128g/m²

Duplexing

Standard

Dimensions (W x D x H)

690 x 790 x 1,165mm

Weight

Less than 206kg

Power source

220 - 240V, 50/60Hz

Power consumption

Maximum: Less than 1.85kW

Scanner (option)¹

Scan speed

Maximum 75 originals per minute
(MH, A4/LEF)

Resolution

600dpi (TWAIN: 1,200dpi), 256 level
greyscale

Maximum original size

A3

Output formats

PDF/JPEG/TIFF

Bundled drivers

Network TWAIN

Scan-to-email

SMTP, TCP/IP

Destination addresses

Maximum 500 per job

Stored destination addresses

Maximum 2,000

Address book

Via LDAP or locally on Hard Disk Drive

Scan-to-folder

Via SMB or FTP protocol

Destination

Maximum 50 folders per job

Software

Standard: SmartDeviceMonitor[™] for
Admin/Client, Web SmartDeviceMonitor[™],
Web Image Monitor (embedded),
DeskTopBinder[™] Lite, TWAIN driver, Printer
utility for Macintosh, Agfa Font Manager
Option: Desk TopEditor For Production,
doc-Q-manager, doc-Q-route, Equitrac
Office[™], SCS/IPDS printing

Other Options

- 4,000-sheet large capacity tray
- Cover interposer
- 3,000-sheet finisher with
100-sheet stapler
- 3,000-sheet finisher with
50-sheet stapler
- 2,000-sheet booklet finisher
- Jogger unit for finisher
- 9-bin mailbox
- 2/4 hole punch unit for finisher
- Professional booklet maker
- Z-folder
- GBC StreamPunch[™] III
- Data Overwrite Security Unit
- Copy Data Security Unit
- File Format Converter
- Copy Connect kit
- Professional software solutions

¹ Also available are the standard configuration models
MP 5500^{sr}/6500^{sr}/7500^{sr}, which include a Printer/
Scanner Unit and Developer.

Company management systems applied during the
manufacturing of all Nashuatec products conform to
ISO9001 quality and ISO14001 environmental
management standards.

In compliance with EU RoHS directive
(RoHS: Restriction of Hazardous Substances).

We reserve the right to make amendments to the
technical specifications and external appearance of
this equipment. Please note that the full range of
options shown in this publication may not always be
available. All brand and product names are
recognised, and hereby acknowledged, as registered
trademarks of their respective owners.



Designed for
Microsoft[®]
Windows[™] XP,
2000, ME, 98,
Windows NT[™]



Adobe PostScript[®] 3



NMP7500006680

nashuatec

Part of the NRG group

www.nashuatec.com

