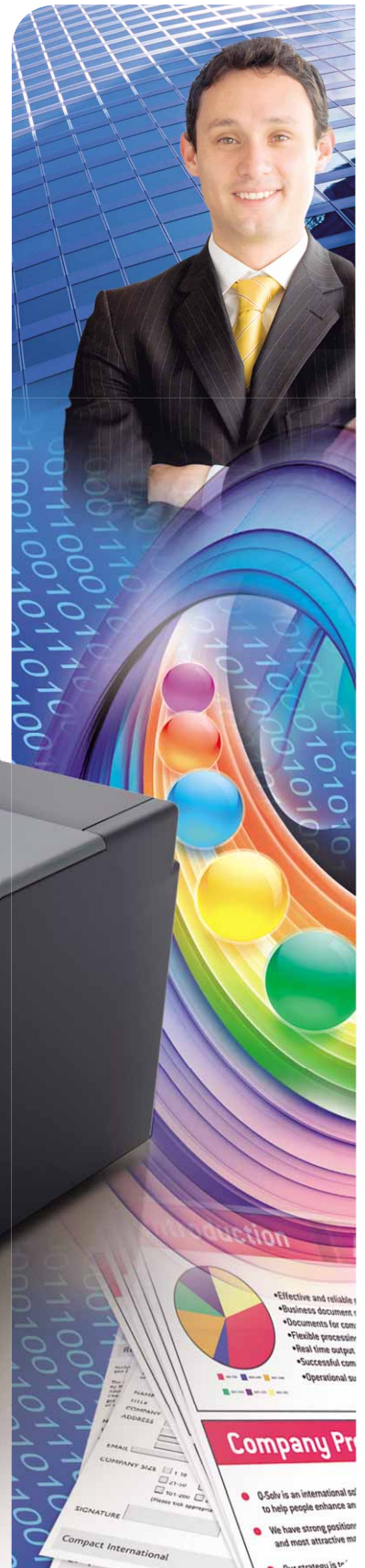


GelSprinter™: Cutting-edge A3 colour printing



Unequaled office printing

State-of-the-art colour technology

Affordable quality and fast colour: the ideal printer offers both. With the GX 7000 Nashuatec presents a powerful A3 colour solution that allows you to benefit from fast on-demand colour printing. Easy to use and simple to maintain, the GX 7000 provides a cost efficient solution.

- Consistently high quality A3 colour prints.
- Best fit on plain paper.
- High speed colour and black & white printing up to 29 ppm.
- Low Total Cost of Ownership.
- Colour virtually as affordable as black & white via Level Color™ mode.
- *GelSprinter™* Liquid Gel™: ultra quick drying, waterproof and sunlight resistant prints.
- Automatic duplexing.
- Optional NIB (Network Interface Board).
- Optional bypass tray for heavy media use.

Normal colour print



'Level Color™' print



Normal B/W print



Experience *GelSprinter™* technology

With the GX 7000's innovative *GelSprinter™* technology, you can now produce high quality documents in-house.

- Vibrant, long lasting 1,200 dpi colour prints due to Liquid Gel™.
- *GelSprinter™* Level Color™ mode: quick colour prints at almost the same cost as black & white prints.
- High quality at high speed: extra wide print head, ultra quick drying Liquid Gel™ and belt transfer system.
- Extra cost savings as no special paper is required.



29 pages per minute
colour and B/W

Get in gear for fast printing

With speeds of up to 29 prints per minute in black & white and colour, the GX 7000 quickly takes care of your print workload. Your first print is ready in a mere 6.5/9 seconds (black & white/colour) and super fast A3 automatic duplexing is standard. Even large print jobs are no problem for the GX 7000: an extra 250-sheet paper feed unit is available to handle peaks.





Impress with A3 prints

Boost your office's image with professional looking A3 documents. Integrating full A3 compatibility, the GX 7000 meets your every requirement. You can now print any A3 application in-house, from Excel files and ledgers to floor plans and leaflets. Furthermore, the optional multi-bypass tray easily handles a wide paper range including thick paper up to 255 g/m².

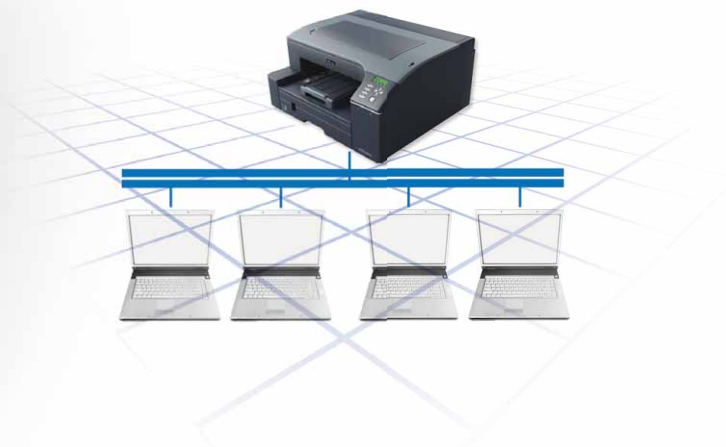


Enjoy ease of use

- Simple installation.
- Straightforward operation.
- Full front access for easy replacement of print cartridges and paper.

Benefit from advanced printing

- Excellent network capability via optional NIB (Network Interface Board).
- Secure printing via RPCS™ driver.
- E-mail alert function to quickly inform you in case of alert situations.
- Printer Status Monitor to easily check the job status and other printer related info.
- Monitoring of print volume through counter functionality.



Help safeguard the environment

Like all Nashuatec products, the GX 7000 reflects Nashuatec's commitment to the environment through the usage of toxic free materials*. Apart from its low power and paper consumption features, the GX 7000 runs very quietly and allows for standard duplexing and the use of recycled paper.

* In compliance with EU RoHS directive (RoHS: Restriction of Hazardous Substances, July 2006).

GENERAL

Continuous print speed:	Up to 29 prints per minute B/W & colour (simplex) ¹	
Default print speed (speed priority mode):	Black and white:	10.5 prints per minute (A4) ¹ RPCS™-raster
	Full colour:	8.5 prints per minute (A4) ¹ RPCS™-raster
Warm-up time:	Less than 35 seconds ²	
First print speed:	Black and white:	Less than 6.5 seconds
	Full colour:	Less than 9 seconds
Dimensions (W x D x H):	545 x 558 x 265 mm	
Weight:	19.1 kg	
Power source:	220 - 240 V, 50/60 Hz	
Power consumption:	Maximum:	35 W
	Energy saver mode:	Maximum 5 W
Duty cycle:	Up to 10,000 pages per month	

CONTROLLER

Printer language/resolution:	RPCS™-raster: Up to 3,600 x 1,200 dpi equivalent	
Driver:	RPCS™-raster: Windows® 98/Me/NT4.0/2000/XP/Server 2003/Vista	

CONNECTIVITY

Network protocol:	TCP/IP	
Supported networks:	Windows® 98/Me/NT4.0/2000/XP/Server 2003/Vista	
Interface:	Standard:	USB 1.1/2.0
	Option:	Ethernet 10 base-T/100 base-TX

PAPER HANDLING

Paper input capacity:	Standard:	250-sheet paper feed unit
	Maximum:	600 sheets
Paper output capacity:	100 sheets (face up)	
Paper size:	A6 – A3, Letter, Legal, Executive, Envelope	
Paper weight:	Paper feed units:	60 – 105 g/m ²
	Optional multi-bypass tray:	60 – 255 g/m ²
Media:	Plain paper, recycled paper, semi-gloss photo paper, envelopes	
Duplexing:	Standard	

CONSUMABLES

Cartridges:	Black:	1,500/3,000 sheets (regular/high yield) ³
	C, M, Y:	1,000/2,300 sheets (regular/high yield) ³

Ink Collector Unit

OPTIONS

- 100-sheet multi-bypass tray
- 250-sheet paper feed unit
- Network Interface Board Type GX3.

- ¹ Speed depends on the type of document and print mode.
² From power on, excluding "Auto Maintenance".
³ A4 with 5% coverage, at default print speed.

For availability of models, optional apparatus and software, please consult your local Nashuatec supplier.



ISO9001: 2000 certified
 ISO14001 certified

Nashuatec has designed this product to meet EC ENERGY STAR guidelines for energy efficiency.

Nashuatec believes in conserving the earth's precious natural resources.

This product complies with EU RoHS directive (RoHS: Restriction of Hazardous Substances, July 2006).

All brand and/or product names are trademarks of their respective owners.

Specifications and external appearance are subject to change without notice. The colour of the actual product may vary from the colour shown in the brochure. The images in this brochure are not real photographs and slight differences in detail might appear.

Copyright © 2007 Ricoh Europe PLC. All rights reserved. This brochure, its contents and/or layout may not be modified and/or adapted, copied in part or in whole and/or incorporated into other works without the prior written permission of Ricoh Europe PLC.

www.nashuatec.com